

# Get Floored

By innovative and futuristic  
flooring solutions



**we  
care**

# SAINT-GOBAIN WEBER

**Weber**, a rich work heritage

Founded in  
**1902**

Operating in  
**64+**  
countries

**200+**  
production  
units

**10,000+**  
team members

## SAINT-GOBAIN WEBER INDIA

Combines global expertise with deep local knowledge to provide innovative solutions, specifically created for the Indian environment.

Incorporated in  
**2004** as a  
**100%**  
subsidiary of  
Saint-Gobain India Pvt.

Supported by  
**7**  
strategic  
research  
laboratories  
globally

## Our product range

Floorings

**Saint-Gobain  
Weber India**

A reliable name in construction  
solutions for every corner of  
your structure

Wall  
solutions

Tile grouts

Tile and  
stones  
fixing

Waterproofing  
solutions



# WEBER FLOORING SYSTEMS

A trusted name in wall solutions, tile adhesives, grouts, waterproofing, Weber is now setting foot in a new arena of flooring solutions. Leveraging the experience in the construction field for decades, we are now ready to address various limitations of concrete floor like:

- Dust generation
- Resistance to chemicals
- Temperature fluctuations
- Crack development
- Difficulty to repair impact damages
- Permeable and prone to fungus growth and moulds
- Aesthetics

## WEBER PRODUCTS ARE AVAILABLE IN VARIOUS APPLICATION AREAS

- High build coatings
- Self levelling system
- Epoxy polyurethane system
- Cementitious polyurethane
- Car deck systems
- Electrostatic dissipative flooring
- Insulation flooring
- Decorative flooring

## WEBERFLOOR PRODUCT RANGE COMES WITH VARIOUS BENEFITS:

- Aesthetic seamless surface impermeable to liquids
- Available in wide color options
- Hygienic and easy to clean
- Resistant to wear and tear
- Resistant to a wide range of chemicals
- Suitable for steam cleaning operation
- Provides excellent bonding with concrete surface
- Increases durability of flooring







## FUNCTIONAL FLOORING SYSTEM

Weber presents a holistic range of flooring systems that cater to the requirement of various industrial and commercial structures. After a detailed study of various flooring requirements and years of R&D, we are introducing a different flooring solution to fit specific industrial requirements.

- GRADE WISE VARIATIONS
- FUNCTIONAL VARIATIONS



# GRADE WISE VARIATIONS

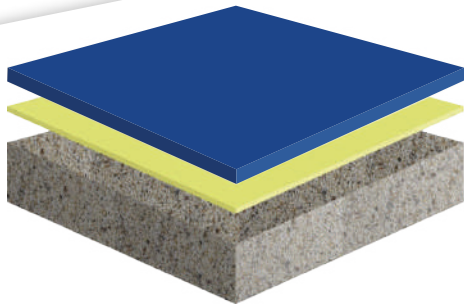
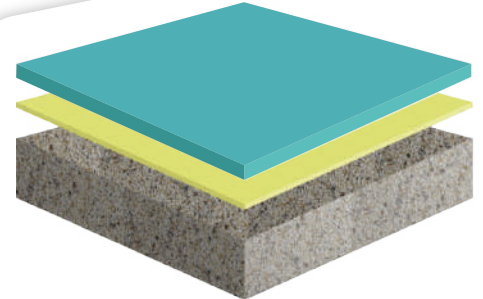
Weber is introducing an industry specific range of flooring systems in different grades that are required by different industries. From moderate to very heavy grades of product we make 5 grades of solutions available so that every industry can choose the one that suits their requirement perfectly.

## Moderate Duty – High build system

With a thickness of 300 - 500 microns these give moderate chemical resistance, dustproofing and are ideal for automobile workshops, engineering units with static loads, cold rolled steel warehouse, laboratories, paper processing and textile units.

### System sequence

- Primer – **Weberfloor Easygrip 120** – 1 x 50 microns
- Top coat – **Weberfloor Finish 500** – 1 or 2 coats x 200-250 microns



## Medium Duty – Self leveling system

With a thickness of 1000 microns this self levelling system of medium duty is used for flooring in auto/auto ancillary, workshops, laboratories, electronics, general manufacturing, engineering units, chemical and pharma units.

### System sequence

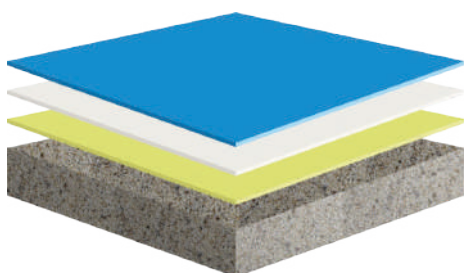
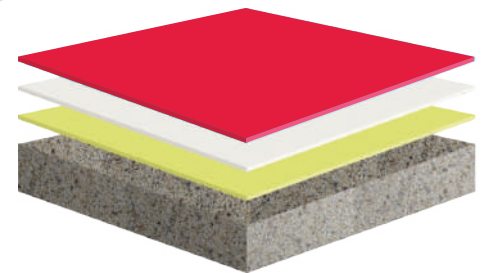
- Primer – **Weberfloor Easygrip 120** – 1 x 50 microns
- Top coat – **Weberfloor Finish 1000** – 1 x 1000 microns

## Heavy Duty – Multilayer system

This multilayer system is 2000 – 3000 microns thick and is used in areas where there is frequent hand trolley movement or intermediate forklift movement. It is most suited for auto/auto ancillary, hangar, laboratories, electronics, general manufacturing, engineering units, food and pharmaceutical units, warehouses, laboratories and clean rooms.

### System sequence

- Primer – **Weberfloor Easygrip 120** – 1 x 50 microns
- Intermediate coat – **Weberfloor Undercoat 1200** – 1 x 2000 microns
- Top coat – **Weberfloor Finish 1000** – 1 x 1000 microns



## Heavy Duty – EPU Multilayer system

EPU multilayer system has a thickness of 2000 – 3000 microns and is used in areas where there are frequent hand trolley movements or intermediate forklift movements. It is best suited for industrial premises like auto/auto ancillary, hangar, laboratories, electronics, general manufacturing, engineering units, food and pharmaceutical units, warehouses, laboratories and clean rooms.

### System sequence

- Primer – **Weberfloor Easygrip 120** – 1 x 50 microns
- Intermediate – **Weberfloor Undercoat 1200** – 1 x 2000 microns
- Top coat – **Weberfloor Topfinish 1000** – 1 x 1000 microns

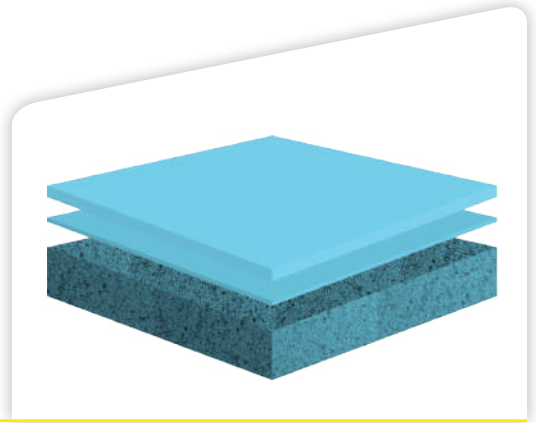


## Very Heavy Duty

Very heavy duty flooring systems have the maximum thickness of 4000 to 6000 microns and are specially designed to meet specific requirements of areas with very frequent forklift movement. They are suitable for food and pharma, auto/auto ancillary, general manufacturing, engineering units, warehouses and laboratories.

### System sequence

- Primer / Scratch coat – **Weberfloor Webcrete 4K** – 1 x 1000 microns
- Top Coat – **Weberfloor Webcrete 4K** – 1 x 1000 microns

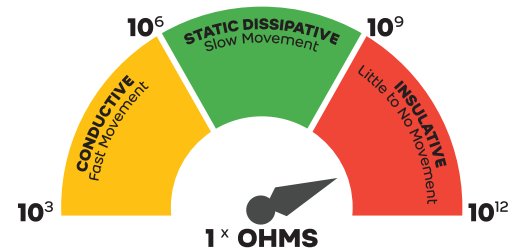


## FUNCTIONAL FLOORING SYSTEMS

Industrial floorings need different flooring solutions based on the type of operations that are conducted there. Weber's range of functional systems is designed to suit the individual requirements of various industrial premises of warehouses, logistics, food manufacturing units, pharma units, car parks and many more.

## Di Electric flooring

In electrical based industrial structures or units the flooring needs to have a high level of electric insulation, high breakdown voltage so that the floors are reliably safe from any potential electrical leakage. In high voltage risk areas like electric panel rooms, substation rooms etc these Di Electric flooring systems ensure safety of the structure and the people working there.



### Highlights of these systems

- Seamless and glossy
- Easy to install
- Easy to clean, maintain or repair
- Provide an impermeable surface
- No replacement needed

#### • HT Voltage - For Insulation upto 48 KV

- Primer – **Weberfloor Easygrip 120** – 1 coat x 50-60 microns
- Mid coat – **Weberfloor Undercoat 1200** – 1 coat x 2000 microns
- Top Coat – **Weberfloor Insucoat 2000** – 1 coat x 2000 microns

### System sequences based on voltage against which protection is needed:

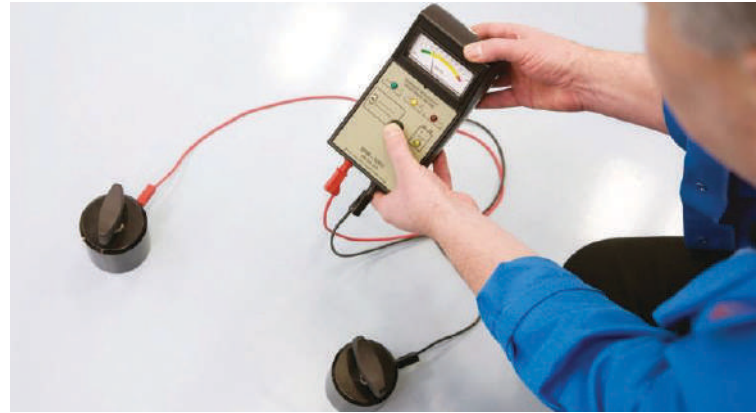
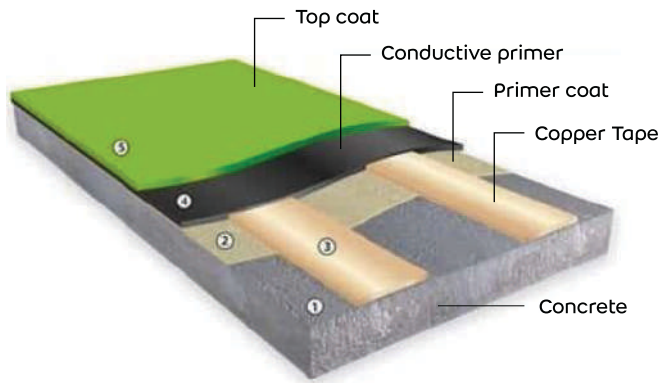
#### • LT Voltage - For Insulation upto 11 KV

- Primer – **Weberfloor Easygrip 120** – 1 coat x 50-60 microns
- Top Coat – **Weberfloor Insucoat 1500** – 1 coat x 1500 microns



## Electro-static dissipative (ESD) flooring

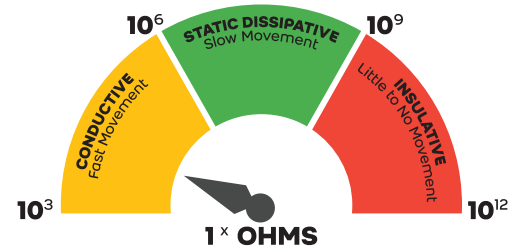
Designed to suit the requirements of Electro-static dissipative (ESD) flooring inhibits the accumulation of static charges by reducing the electrical resistance of the floor and thereby facilitating grounding of the generated static charges. In areas where solvents or volatile goods are processed, any spark due to static charges poses a potential fire risk. To prevent such damage, Weber provides anti static floorings that facilitate easy movement and grounding of these static charges to the earthing pit and keeping the structure safe and functional.



### The 2 system sequences based on electrical resistance consist of:

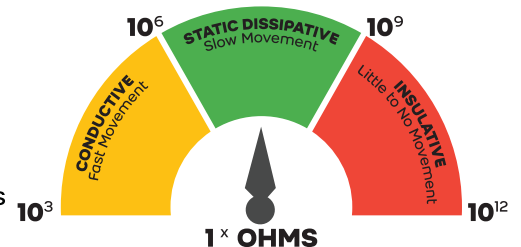
#### • Typical electrical resistance from $1 \times 10^6 \Omega$ - $1 \times 10^9 \Omega$

- Concrete primer – **Weberfloor Easygrip 120** – 1 coat x 50-60 microns
- Self adhesive copper tape – In grid format to create grids of 3 mtr x 3 mtr
- Conductive primer – **Weberfloor Easygrip 401** – 1 coat x 100 microns
- ESD top coat – **Weberfloor Finish ESD** – 1 coat x 1500 – 2000 microns



#### • Typical electrical resistance from $1 \times 10^3 \Omega$ - $1 \times 10^6 \Omega$

- Concrete primer – **Weberfloor Easygrip 120** – 1 coat x 50-60 microns
- Self adhesive copper tape – In grid format to create grids of 3 mtr x 3 mtr
- Conductive primer – **Weberfloor Easygrip 401** – 1 coat x 100 microns
- ESD top coat – **Weberfloor Finish Conductive** – 1 coat x 1500 – 2000 microns



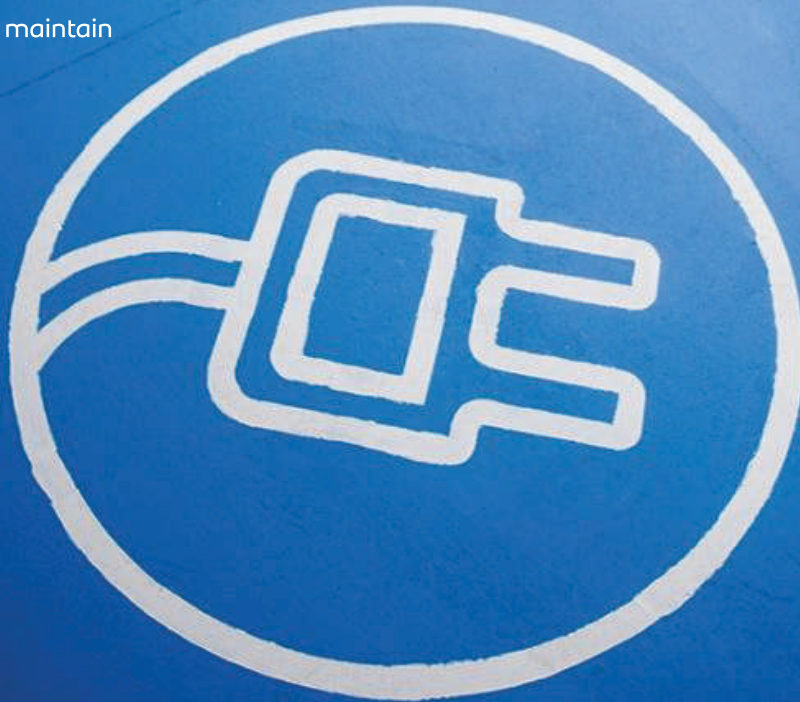


# Car deck flooring

Modern life with almost every household owing at least a single car has made the car parking deck as important as the other places in any structure. Weberfloor car parks replace the traditional IPS floors / anti skid tiles / paver blocks with aesthetic surfaces and reduce the dead load on the surface.

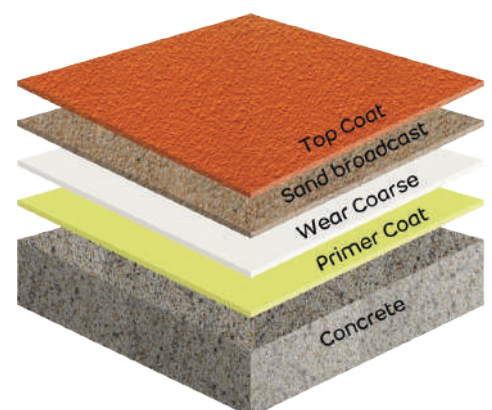
## They also provide additional benefits like

- Easy demarcation of areas
- Better lighting
- Protection of concrete from wear and tear
- Faster installations backed by a professional team of applicators
- An additional degree of safety due to its anti skid properties
- Protection of concrete from accidental fuel spillage
- Availability in wide range of colours
- Easy to clean and maintain



## • Car deck flooring system sequence:

- Primer – **Weberfloor Easygrip 120** – 1 x 50 microns
- Undercoat – **Webefloor Cardeck BC** – 1 x 500 microns
- **Sand broadcasting** – Anti-slip grains
- Top Coat – **Weberfloor Cardeck TC** – 1 x 500 – 600 microns



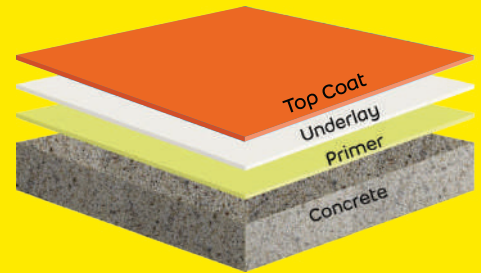


# Chemical resistant flooring

Chemical processing units have a distinct danger of potential damage due to constantly being near to strong chemicals. Weberfloor range creates chemical resistant floors that protect accidental spillage of the corrosive action of chemicals thus extending the durability of concrete surfaces.

- **Chemical resistant flooring system sequence:**

- Primer – **Weberfloor Easygrip 120** – 1 x 50 microns
- Undercoat – **Webefloor Undercoat 1200** – 1 x 2000 microns
- Top Coat – **Weberfloor Finish CR 650** – 1 or coats x 500 microns

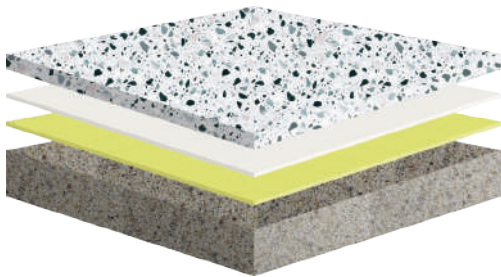


## Decorative flooring

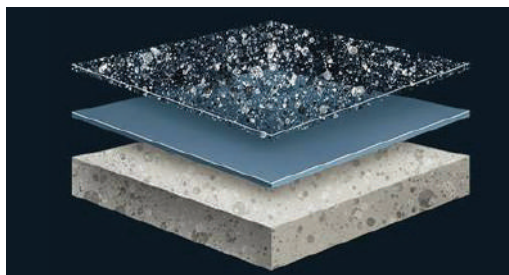
An inherently strong flooring base by weberfloor can be further beautified by topping the decorative flooring as the visible flooring option over the inner layers of protection of flooring solutions.

### These come in three types:

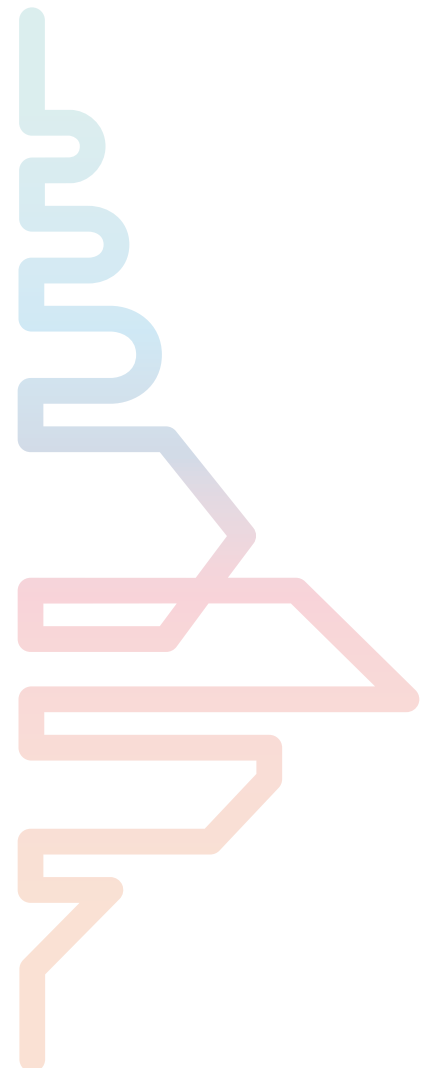
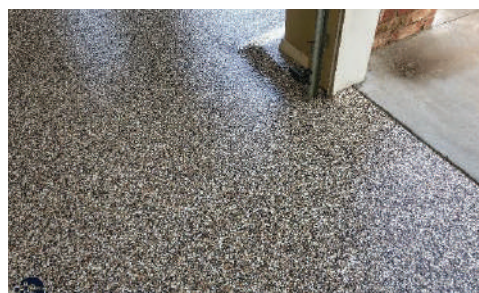
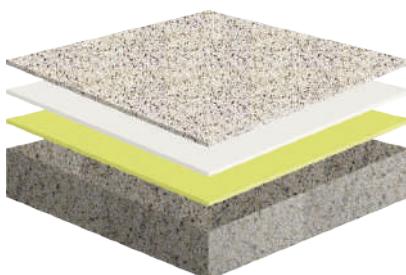
#### Terrazo flooring



#### Deco flakes flooring



#### Granular flooring



# HOW TO SELECT THE PERFECT FLOORING SOLUTION?

**While selecting the perfect flooring system for your industrial unit consider the following points**

- Chemical resistance
- Abrasion resistance
- Constant and heavy footfall resistance
- Wear and tear resistance

		Very rarely (per week)	Rarely (per day)	Occasionally (per shift)	Frequently (per hour)	Very frequently (per minute)
Severity of traffic/abrasion/wear	Low to moderate abrasion; foot traffic, rubber-tyre traffic	Low Duty	Low Duty	Low Duty / Moderate Duty	Moderate Duty	Moderate Duty / Heavy Duty
	Moderate to high abrasion; steel or hard plastic wheeled traffic	Low Duty	Low Duty / Moderate Duty	Moderate Duty	Moderate Duty / Heavy Duty	Moderate Duty / Heavy Duty > 4 mm
	High abrasion; steel or hard plastic wheeled traffic and some impact, moderate loadings	Moderate Duty	Moderate Duty	Moderate Duty / Heavy Duty	Moderate Duty / Heavy Duty >4 mm	Heavy Duty / Very Heavy Duty 4-6 mm
	Very high abrasion from steel or hard plastics wheeled traffic and/or scoring by dragged metal objects, some impact, heavy loadings	Moderate Duty	Moderate Duty / Heavy Duty	Moderate Duty / Heavy Duty > 4 mm	Heavy Duty / Very Heavy Duty 4-6 mm	Very Heavy Duty >6 mm
	Severe abrasion from steel or hard plastics wheeled traffic and/or scoring by dragged metal objects, some impact, heavy loadings, aggressive environment	Moderate Duty / Heavy Duty	Moderate Duty / Heavy Duty >4 mm	Heavy Duty / Very Heavy Duty 4-6 mm	Very Heavy Duty >6 mm	Very Heavy Duty >6 mm

Our solutions are designed to impart strength, give a seamless finish, and ensure safety of the floor. All solutions are user friendly, low maintenance and long lasting.



# SELECT THE RIGHT PRODUCT BASED ON ITS USE:

Sr. No.	Coat	Product
1	Epoxy Primer	Weberfloor Easygrip 120
2	Conductive Epoxy Primer	Weberfloor Easygrip 201
3	Epoxy Screed	Weberfloor Undercoat 1200
4	Epoxy Screed	Weberfloor Undercoat 2300
5	Epoxy Finish Coat	Weberfloor Finish 500
6	Epoxy Top Coat	Weberfloor Finish 1000
7	Epoxy Top Coat	Weberfloor Finish 2000
8	Epoxy Polyurethane Top Coat	Weberfloor Topfinish 1000
9	Conductive Top Coat	Weberfloor Finish Conductive
10	Anti-static top coat	Weberfloor Finish ESD
9	Insulation flooring	Weberfloor Insucoat 1500
10	Insulation flooring	Weberfloor Insucoat 2000
11	PU Concrete	Weberfloor Webcrete 4K
12	Car deck base coat	Weberfloor Cardeck BC 301
13	Car deck top coat	Weberfloor Cardeck TC 310



5th Level, Leela Business Park,  
Andheri - Kurla Rd, Mumbai,  
Maharashtra 400059  
[www.in.weber](http://www.in.weber)

☎ 1800 267 8889

f [www.facebook.com/SaintGobainWeberIndia](https://www.facebook.com/SaintGobainWeberIndia)

in [www.linkedin.com/company/saint-gobain-weber-india](https://www.linkedin.com/company/saint-gobain-weber-india)

📷 [www.instagram.com/saintgobainweberindia](https://www.instagram.com/saintgobainweberindia)

📺 [www.youtube.com/@SaintGobainWeberIndia](https://www.youtube.com/@SaintGobainWeberIndia)